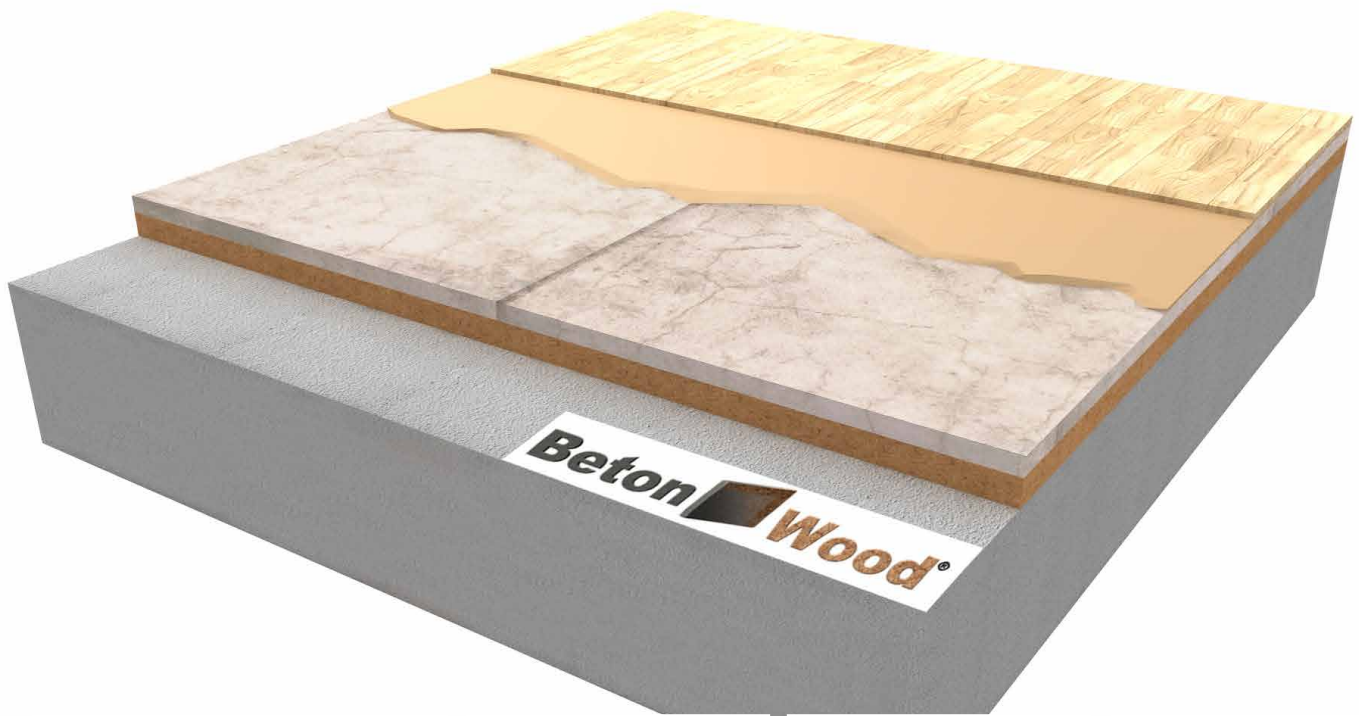


# Floor betonfiber

Complete dry floor system with Betonfiber coupled panels and ultra-rapid hardening self-leveling Betonultraplan

# Beton Wood

Complete insulating floor system with high performances



## | DESCRIPTION

Complete dry building floor system on new and existing grounds with high performances Floor betonfiber guarantees the maximum durability over time is guaranteed, with international ETA certification.

The floor system in new construction or renovations of existing floors consists in a first layer with cement bonded particle boards coupled with natural insulating wood fiber Betonfiber.

Above one or more layers of self-leveling ultra-fast hardening Betonultraplan are laid to level out and eliminate thickness differences from 1 to 10 mm, and at the same time guarantee high resistance to loads.

Excellent system for excellent thermal and acoustic insulation of walkable floors.

Stratigraphy consists of Betonfiber coupled panels in cement bonded particle boards and natural insulating wood fiber, with an excellent compression resistance, high density (1350 kg/m<sup>3</sup>). Coupled with a high thermal displacement.

On top of this stiffening / insulation layer one or more layers of Betonultraplan self-leveling smoothing layer with ultra-rapid hardening is applied, to level and eliminate thickness differences from 1 to 10 mm.

Solution with high thermal performance and simple application.

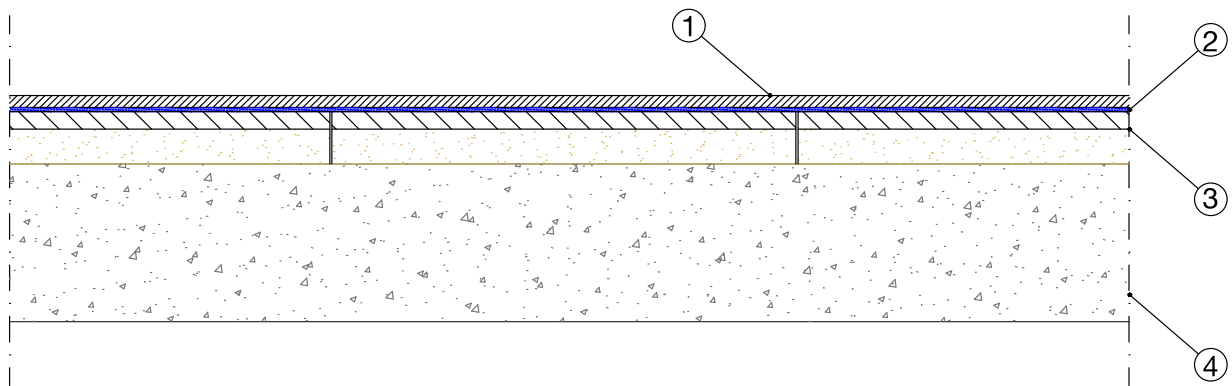
## Advantages

- Excellent protection from cold, heat and noise;
- Excellent protection from summer heat thanks to its high thermal displacement;
- High acoustic insulation thanks to the porosity of the insulating panels;
- Available thicknesses from 8+20 to 20+160 mm;
- It creates a comfortable living climate;
- Ecologic material with controlled quality, recommended by Natureplus®;
- Hygroscopic material regulates humidity and gives us security over time.

For more informations about the uses and the installation, our offices are ready to answer your questions on [www.betowood.com](http://www.betowood.com)



## | STRATIGRAPHY



- 1 Floor finish surface
- 2 Self-leveling **Beton Ultraplan** self-leveling and ultra-rapid hardening agent used in indoor environments to level and eliminate thickness differences from 1 to 10 mm of new or existing substrates, making them suitable for receiving any type of flooring in rooms where high resistance to loads and traffic is required .  
The consumption of **Beton Ultraplan** is 1.6 kg/m<sup>2</sup> per millimeter of thickness.
- 3 **Betonfiber** **Beton fiber** is an ideal product for thermo-acoustic insulation in green building, because the advantages of two materials are combined in a single coupled: on one side a material with a high mass and high compressive strength, the **BetonWood** cement bonded particle board high density, which is essential to obtain an adequate thermal displacement and a great noise reduction, on the other a totally natural **Fibertherm** fiber wood panel, characterized by lightness, high insulating capacity and ease of processing.
- 4 **Ground** new building and/or existing grounds



## | SYSTEM'S PRODUCTS



**Betonultraplan** Self-leveling, ultra-rapid self-leveling smoothing. BetonUltraplan mixed with water gives rise to a very smooth mixture, easy to work, perfectly self-leveling, with high adhesion to the substrate and very quick drying.

It is applicable with pump up to distances of over 100 m.

It is applied in thicknesses up to 10 mm for each single hand, without undergoing any shrinkage, without forming cracks, until it reaches a high resistance to compression, flexion, imprint and abrasion.

The consumption of BetonUltraplan is 1,6 kg/m<sup>2</sup> per millimeter of thickness.

BetonUltraplan is available in 23 kg bags.



**BetonFiber** BetonFiber is ideal for thermo-acoustic insulation, with a rigid panel, wooden or traditional building constructions. In a single panel, the advantages of wood fiber, a natural insulator with high thermal performance, are combined with those of cement bonded particle boards, a high density natural material, which allows excellent results in thermal displacement and acoustic insulation.

Insulating panels BetonFiber in cement bonded particle boards and wood fiber panels. This panels is made by two coupled layer, one characterized by the extremely high density (1350 Kg/m<sup>3</sup>) BetonWood cement bonded particle board and the other is a natural insulating wood fiber panel type FiberTherm.

Betonfiber:

- can be used as an insulation for floors that require a high mass due to thermal displacement and acoustic abatement;
- the cement-wood panel protects the wood fiber from moisture and fire (class A2), the entire panel is walkable, therefore suitable for laying on horizontal surfaces;
- has very high compressive strength (9,000.00 KPa).

BETONWOOD Srl

Head office :  
Via Falcone e Borsellino, 58  
I-50013 Campi Bisenzio (FI)

T: +39 055 8953144  
F: +39 055 4640609

info@betonwood.com  
www.betonwood.com

PBTFAUTOLC - STR.18.5

## | CERTIFICATIONS

The BetonFiber and self-leveling BetonUltraplan floor insulation system is produced with CE certified materials in accordance with current regulations.



GENERAL SECURITY INSURANCE GUARANTEE  
ON THE PRODUCT WITH CORRECT DOCUMENTED  
INSTALLATION WITH PHOTOGRAPHS

**Beton Wood**

