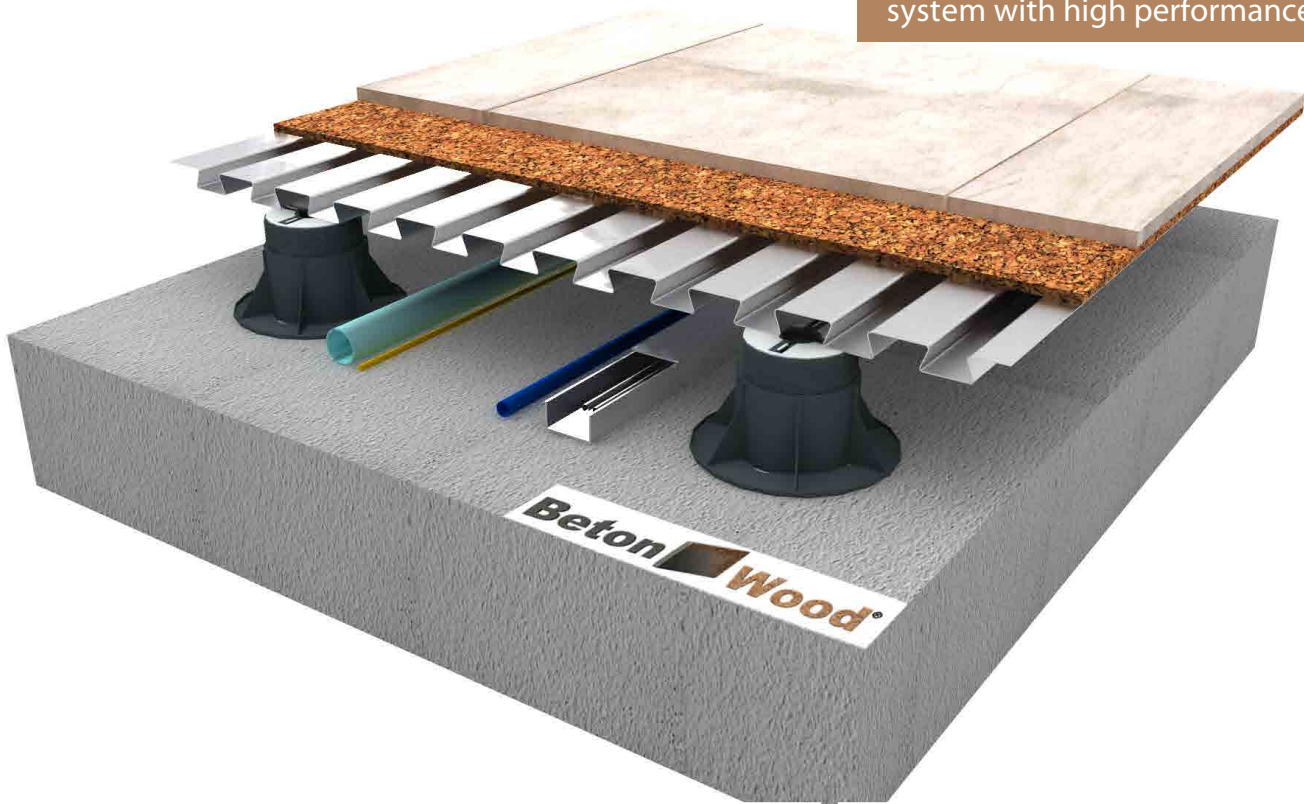


Metal elevated floor **btw + cork10** **Beton** **Wood**

Elevated floor system with cement bonded particle boards
BetonWood on Cork Panels plus on dovetailed sheeting

Complete insulating screed
system with high performances



| DESCRIPTION

Complete system for elevated dry floor supported by a dovetailed sheeting system. In this solution we'll have a layer of cement bonded particle boards BetonWood density 1350 kg/m³ and an insulating layer of super-compressed blond cork panels Cork Panels plus. Maximum durability over time is guaranteed, with international ETA certification.

The system consists in cement bonded particle boards BetonWood with available thicknesses 18/20/22 mm fixed with screws type NF57 to the dovetailed sheet Beton metal sheet. Between the metal sheet and the cement bonded particle boards is installed a layer of insulating blond Cork Panels plus.

High acoustic performance, naturalness and simplicity of execution.

The stratigraphy consists in a dovetailed sheeting system with a thickness of 16mm type Betonmetal sheet installed on self-leveling supports type SB; above the dovetailed sheeting it must be installed an insulating layer of CorkPanels plus with a thickness of 10 mm to guarantee greater thermal and acoustic insulation.

Completing the floor solution, above the insulating layer, a stiffening layer of cement bonded particle boards BetonWood is fixed with screws. These panels, according to construction needs, might have thickness of 18, 20 or 22 mm.

The screws must be type NF57 and anchored near the corners and the middle of the edges of the panel.

High acoustic performance, naturalness and simplicity of execution.

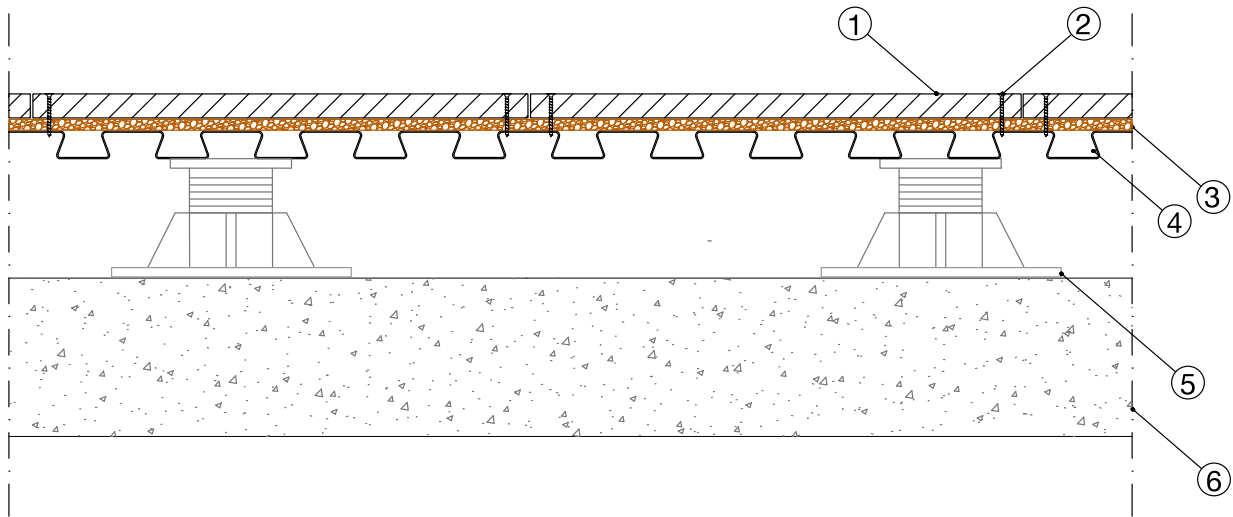
Advantages

- Excellent mechanical resistance
- Excellent compression strength
- Fire reaction class A2-fl-s1
- Extreme ease of installation

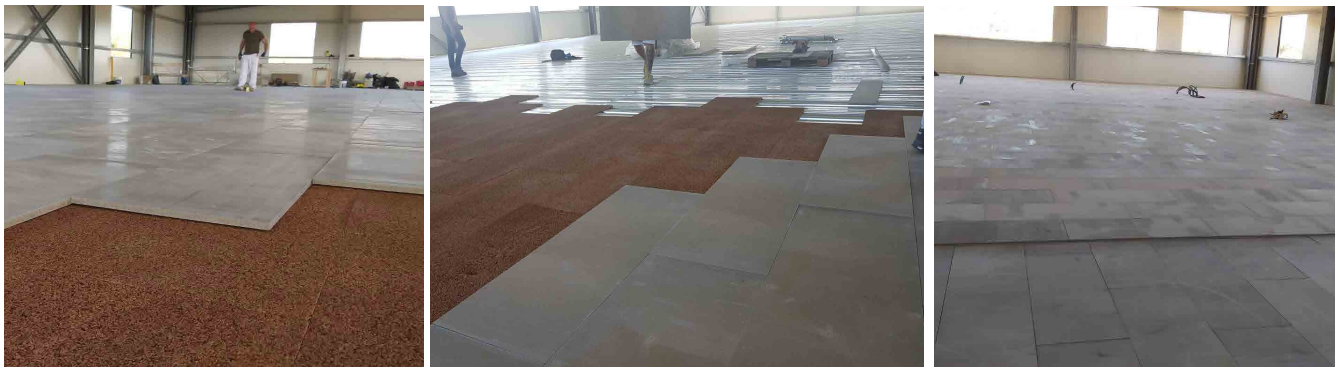
For more informations about the uses and the installation,
our offices are ready to answer your questions on www.betowood.com



STRATIGRAPHY



- 1 **Cement bonded particle boards Betonwood** thicknesses 18/20/22mm Each panel is made of Portland-type concrete conglomerate and debarked pine wood fiber with the following thermodynamic characteristics: density ($\delta=1350 \text{ Kg/m}^3$), coefficient of thermal conductivity $\lambda=0,26 \text{ W/mK}$, specific heat $c=1,88 \text{ KJ/Kg K}$, coefficient of resistance to vapor penetration $\mu=22,6$ and A2-fl-s1 fire reaction class, according to the standard EN 13501-1.
The wood used in the processing of the panel comes from forests controlled and certified FSC.
- 2 **Screws type NF57** Self-drilling screws for fixing BetonWood Tongue&Groove cement bonded particle boards directly to the metal sheet. 9 screws are necessary for fixing each panel.
- 3 **Cork Panels plus** thickness 10 mm the insulating panel between metal sheet and cement bonded particle boards is made by blond cork panels which have a thickness of 10 mm type Cork Panels plus. Blond cork is a very insulating and sound-absorbing material, then we'll have a significant improvement of the thermal and acoustic insulation. In addition, it don't generate mold and it is suitable for particularly humid environments.
- 4 **Beton Metal Sheet** thickness 16 mm dovetailed sheeting has a unique S-shaped geometry as a result of which the highest possible load bearing capacity of the floor is ensured by the composite action between the sheet and the fine grade aggregate concrete or self-levelling liquid screed.
- 5 **Adjustable supports** thickness 25/270 mm Adjustable Floor Stands have anti-noise rubber head, specific adjustment key, variable heights, pre-cut base for wall corner cutting. Possibility to adjust the height millimetrically (adjustable from 25 to 270 mm), in favor of a perfect leveling of the flooring.
- 6 **Ground** new building and/or existing grounds



PRODUCTS USED IN THIS SYSTEM



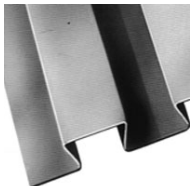
BetonWood The BetonWood cement bonded particle boards, with high density (1350 Kg/m^3), made of Portland-type cement conglomerate and debarked Pine wood fiber. These panels have the following thermo-dynamics characteristics: thermal conductivity coefficient $\lambda=0,26 \text{ W/mK}$, specific heat $c=1,88 \text{ KJ/Kg K}$, coefficient of resistance to vapor penetration $\mu=22,6$ and reaction to fire class A2-fl-s1, according to the standard EN 13501-1. The panels size is ... mm and the thickness is ... mm. The wood used in panel processing comes from forests controlled by FSC reforestation cycles and pressed with water and hydraulic binder (Portland cement) with high cold compression ratios.



Screws NF 57 The screw has a special anti-corrosion coating that guarantees a 1,000-hour salt spray resistance. Under-head with very sharp self-sinking fins for a perfect housing of the head flush with the slab. Drill bit that allows a perfect drilling capacity even on high sheet thicknesses.



Cork Panels plus is an insulating panel in blond cork characterized by excellent thermal insulation and breathability values typical of natural cork, which reduce the formation of mold and moisture compared to traditional products; Another characteristic characteristic of cork is that of guaranteeing an excellent noise reduction, making it an ideal product for the construction of impact soundproofing floors of the inter-floor slabs, thanks also to its high compressive strength.



The profile of the **Beton metal sheet** Dovetailed sheeting has a unique S-shaped geometry as a result of which the highest possible load bearing capacity of the floor is ensured by the composite action between the sheet and the fine grade aggregate concrete or self-levelling liquid screed.

The dimensionally stable profiling ensures an exact fit between the sheets. Leakage between the overlapping seams will not occur even when high slump concrete or a self-levelling liquid screed is used. An optimal filling load can also be realised with the special S-shaped geometry and the dovetailed sheet can be safely walked upon during the implementation phase.



Adjustable supports SB Adjustable Floor Stands have anti-noise rubber head, specific adjustment key, variable heights, pre-cut base for wall corner cutting. Possibility to adjust the height millimetrically (adjustable from 25 to 270 mm), in favor of a perfect leveling of the flooring.

Betonwood srl

Via di Rimaggio, 185
I-50019 Sesto Fiorentino (FI)

T: +39 055 89 53 144
F: +39 055 46 40 609

info@betonwood.com
www.betonwood.com

SBTWCP10BMSSB - ST R19.9

Beton Wood

CERTIFICATIONS

The complete solution for elevated dry floors with dovetailed sheeting system, cement bonded particle boards BetonWood and insulating cork panels, is produced with certified materials with CE mark according to current regulations.



GENERAL SECURITY INSURANCE GUARANTEE
ON THE PRODUCT WITH CORRECT DOCUMENTED
INSTALLATION WITH PHOTOGRAPHS